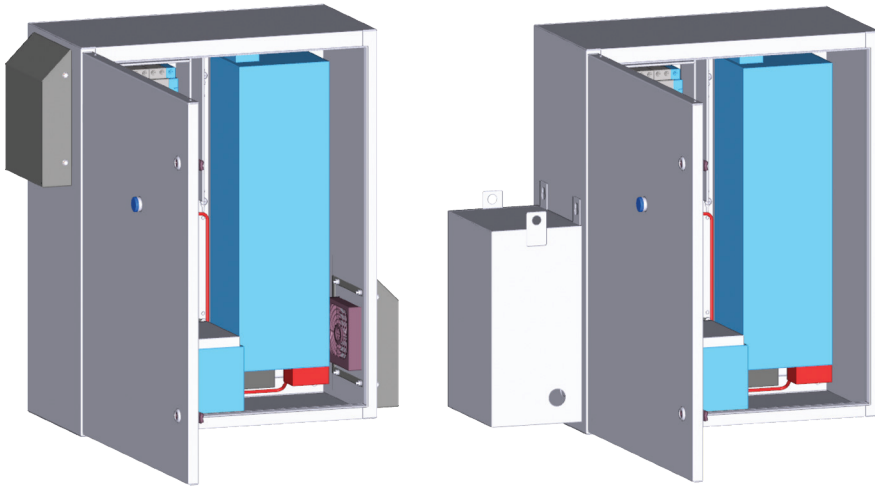




BBU240 Battery Cut Sheet



RSSC Battery Backup

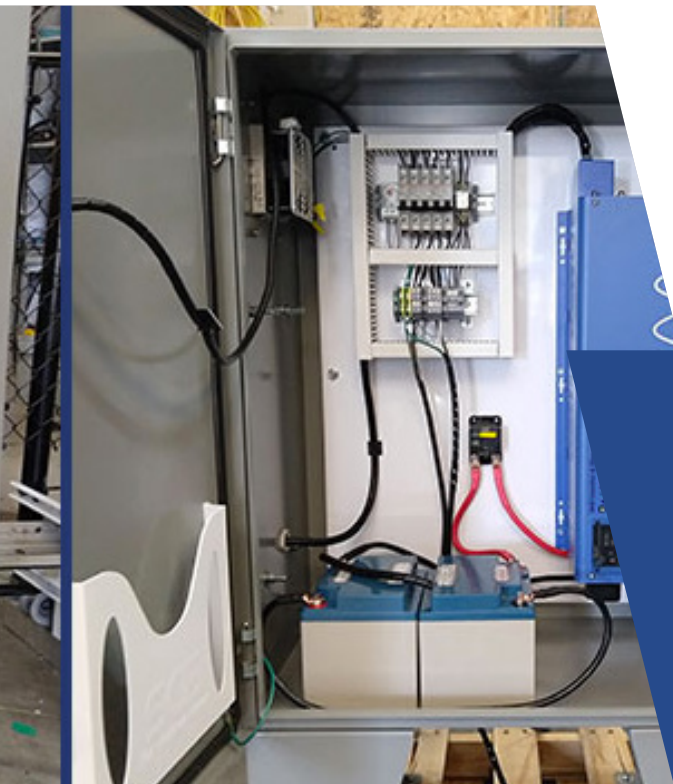


For more info visit or call:
WWW.RSSECURITYCONSULTING.COM
727•330•7636

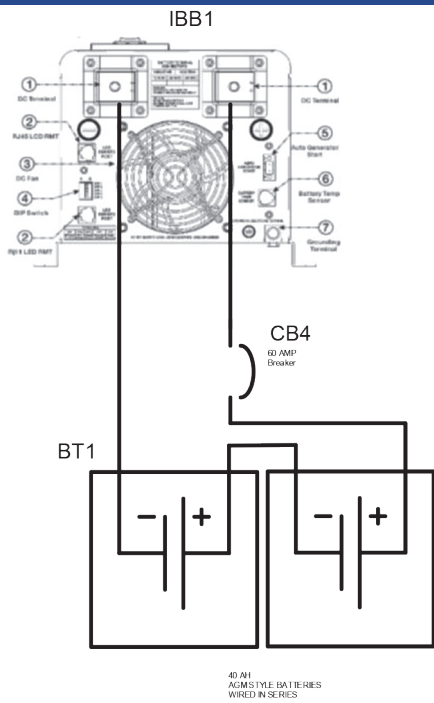
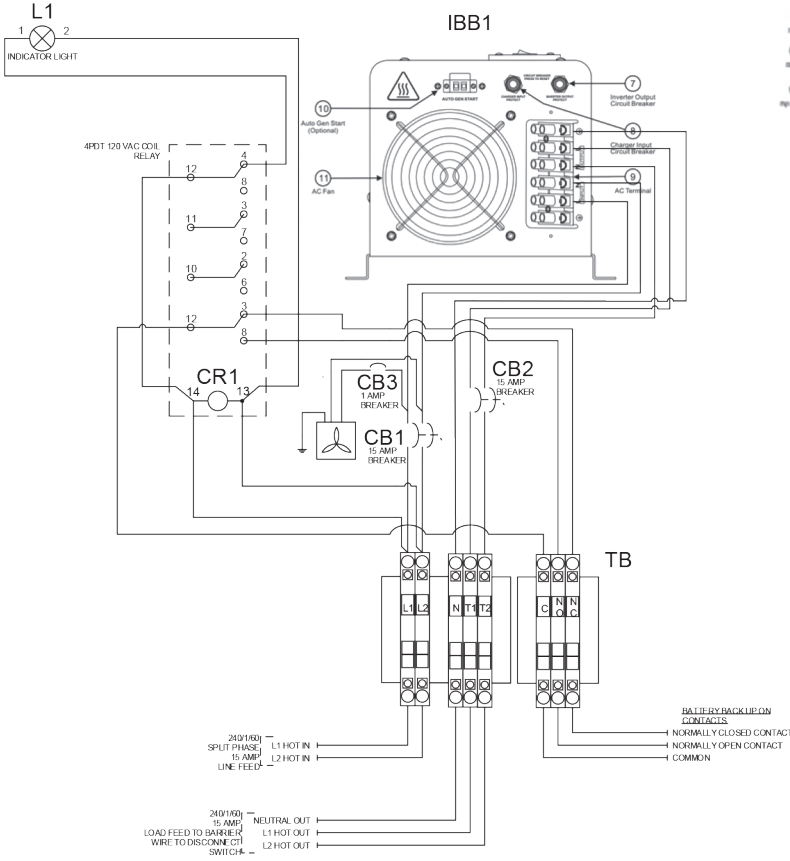
Battery Backup Info

RSSC BBU240 Volt Battery Backup for Barrier Control Systems, Surveillance Systems, Access Control Systems, Slider Drivers, Swing Gates and Hydralift.

Your business security matters, all the time. Regardless of whether there's an energy outage, natural disaster, or mechanical failure, keeping your assets safe is crucial, 24/7. This is why having reliable battery back-up is as essential as your most fundamental business operations. All of our back-ups are compatible with the most popular security systems



BBU240 Battery Cut Sheet



RSSC BBU240 is guaranteed to perform efficiently when installed by itself or with other industry brands.

Designed specifically to be used with products from: Hysecurity, Chamberlain, Liftmaster, Linear, Sentex, B&B Armor & FAAC.

| FEATURES | |
|--|--|
| <ul style="list-style-type: none"> ➤ Keep 3000W Security Devices, Doors, Barriers Running Efficiently In Case of AC Power Loss ➤ 240 VAC Single Phase Input Power ➤ Dual 12 Volt Battery, Standard 40 Amp. Hour | <ul style="list-style-type: none"> ➤ Scalable For More Power Out Cycle ➤ Pure Sine Wave Output/Same as Input (Bypass mode) ➤ Typical Transfer Time of 10ms (Max) ➤ Auto Switch Over to Battery Power |
| ELECTRICAL SPECIFICATIONS - RSSC BBU240 | |
| Inverter Output Specifications | |
| ➤ Model | ➤ 3KW |
| ➤ Continuous Output Power | ➤ 6000W |
| ➤ Surge Rating: | ➤ 9000 WATTS (20 Seconds) |
| ➤ Capable of Starting Electric Motor | ➤ 3HP |
| ➤ Nominal Output Voltage RMS | ➤ 220-230Vac |
| Specifications | |
| ➤ Max Input AC Voltage | ➤ 150VAC ➤ 270VAC |
| ➤ Nominal Input Frequency | ➤ 50Hz or 60Hz (Auto detect) |
| ➤ Enclosure | ➤ NEMA Power Casted |
| ➤ Battery | ➤ 2 x 40 |
| ➤ Standard Warranty | ➤ 1 Year |